



RSET's

**Ladhidevi Ramdhar Maheshwari
night college of commerce**

ENLIGHTENING FUTURE

LRMC



PROSPECTUS

2025 - 26

College Activities



Main Donor's Message



Madhusudan R. Maheshwari

Dear Students and all the stakeholders,

It is a matter of great pride and heartfelt satisfaction for our family to be associated with Ladhidevi Ramdhar Maheshwari Night College of Commerce (LRMC)—an institution that stands as a living testimony to the power of education in transforming lives.

Established in memory of Late Smt. Ladhidevi ji and Shri Ramdhar ji Maheshwari, the college was envisioned as a space where education could reach those who need it most—working professionals, financially constrained youth, and first-generation learners. What began as a humble initiative has today blossomed into a vibrant academic institution committed to excellence, inclusivity, and upliftment.

We are deeply inspired by the college's continued efforts under the aegis of Rajasthani Sammelan Education Trust to deliver quality education in a manner that respects the dignity, aspirations, and unique journeys of its students. The college's focus on value-based learning, flexible timings, skill development, and NEP-aligned academic growth reflects the original spirit with which this institution was founded.

To every student who walks through the gates of LRMC—know that you carry forward a legacy of resilience, hope,

and opportunity. As members of the donor family, we feel honored to support this mission and will always remain committed to nurturing dreams and enabling success through education.

With warm regards and best wishes for the academic year ahead,

“

**Education is the key to
unlocking the world,
a passport to freedom.**

- Oprah Winfrey

Trustees & Members of the Managing Committee of Rajasthani Sammelan Education Trust (2022-2027)

Office Bearers

Shri Saraf Ashok M.	President	Shri Bajaj Rajkamal R.	Vice President
Shri Kejriwal Kailash S.	Hon. Secretary	Shri Saraf Lalit S.	Treasurer
Shri Khemka Jagdish Prasad I.	Joint Treasurer	Shri Kabra Sunil S.	Hon. Joint Secretary
Shri Dalmia Vinod L.	Hon. Joint Secretary		

Donor Trustees

Shri Agrawal Anil B.	Smt. Bajaj Mainadevi R.	Shri Bajaj Vinodkumar R.
Shri Bajaj Rajkamal R.	Smt. Bajaj Deepa V.	Smt. Bajaj Seema R.
Ms. Bajaj Smriti R.	Shri Bajaj Abhishek V.	Ms. Bajaj Anushree R.
Shri Bubna Ramprakash B.	Smt. Bubna Sharda R.	Shri Bubna Ashish R.
Shri Bubna Manish R.	Smt. Bubna Seema A.	Smt. Bubna Anisha M.
Shri Chandgothia Rajaram N.	Shri Deora Vinodkumar M.	Shri Garodia Ashok N.
Shri Goenka Manoj Kumar M.	Shri Goenka Sajjan D.	Shri Goenka Suresh D
Shri Goenka Narendra D.	Smt. Goenka Nishita S	Shri Goenka Samir S.
Shri Goyal Ravi B.	Shri Jajodia Vishal N.	Shri Karwa Krishna Kumar M.
Shri Kejriwal Krishna R.	Shri Lakhota Rakesh B.	Shri Lakhota Akhilesh R.
Shri Mansinghka Mahendrakumar V.	Shri Maheshwari Madhusudan R.	Shri Murarka Suresh C.
Shri Nathwani Dhanraj P.	Shri Pansari Suresh M.	Smt. Pansari Priyanka K.
Smt. Pavankumar Rita	Shri Pavankumar Vikas	Shri Podaar Vinod V.
Smt. Rajpuria Archita N.	Shri Saraf Mahavirprasad G	Shri Saraf Ashok M.
Dr. Saraf Naresh M.	Shri Saraf Prakash M.	Smt. Saraf Neera A.
Smt. Saraf Renu N.	Smt. Saraf Shilpa P.	Ms. Saraf Niharika N.
Shri Saraf Yash P	Shri Saraf Vinay S.	Shri Seksaria Rajkumar K.
Shri Seksaria Nandkumar K.	Shri Seksaria Harshkumar N.	Shri Seksaria Tarun N.
Shri Shah Harish P.	Smt. Shah Bina H.	

Elected Trustees

Shri Dalmia Vinod B.	Shri Goyal Badrinarain K.	Shri Jhunjunwala Banwarilal R.
Shri Kejriwal Kailash S.	Shri Kabra Sunil S.	Shri Maheshwari Piyush M.
Shri Makharia Pranav V.	Shri Rajpuria Kamalnayan K.	Shri Saraf Lalit S.
Shri Thacker Jairaj C.		

Donor Managing Committee Members

Shri Mhaikar Virendra D.	Shri Poddar Arvind M.	Shri Saraf Sharad M.
Smt. Saraf Drishti Y.	Ms. Saraf Aashna P.	Smt. Shah Amira H.
Smt. Shah Anushka H.		

Elected Managing Committee Members

Shri Agarwala Vinod B.	Shri Chirania Sudheer J.	Shri Chirania Sanjeev J.
Shri Dalmia Vinod L.	Shri Dalmia Rajesh J.	Shri Goenka Shailesh S.
Shri Goenka Neeraj S.	Shri Gupta Nandkishore H.	Shri Gupta Rajendraprasad M.
Shri Jain Sudhir M.	Shri Kela Yash P.	Shri Khemka Jagdishprasad I.
Shri Pansari Alok S.	Shri Pansari Navin S.	Shri Pansari Kapal S.
Shri Pansari Chaman S.	Shri Podaar Rahul V.	Shri Rajpuria Yogendra K.
Shri Rajpuria Nikhil K.	Shri Ruia Ramniranjan N.	Shri Ruia Prakash R.
Shri Rungta Ajay J.	Shri Saraf Arun P.	Shri Saraf Aditya V.
Shri Thacker Sujay J.		

Special Invitees

Shri Dalmia Sharad S.	Shri Jain Kapal K.	Shri Kabra Pradeep S.
Shri Lath Sanjay D.	Shri Saboo Arun S.	

Note: Names appearing above are printed in alphabetical order of surname and within a family names are printed as per seniority

Chairman's Message



Ashok M. Saraf

Dear Students, Parents, and Well-Wishers,

It gives me immense pleasure to welcome you to **Ladhidevi Ramdhar Maheshwari Night College of Commerce (LRMC)**, an institution dedicated to empowering learners through accessible, inclusive, and transformative education.

As we enter the academic year 2025–26, we continue our mission to provide meaningful educational opportunities for working students and first-generation learners, enabling them to balance career aspirations with academic excellence. Our commitment to **“Education for All”** is at the heart of everything we do. By offering flexible evening programs in commerce and business studies, LRMC has become a beacon of hope for students who seek to upgrade their qualifications without compromising on their professional responsibilities.

We take pride in our **NAAC accreditation, dynamic faculty, and student-centric approach**. Our updated curriculum, industry-relevant training, and robust support systems ensure that students are well-prepared to meet the demands of a rapidly changing global economy. As part of the **Rajasthani Sammelan Education Trust**, our college draws strength from a legacy of over seven decades in educational excellence and community development.

In alignment with the **National Education Policy (NEP) 2020**, we are actively embracing innovation, skill-based learning, and academic flexibility. The coming year will witness the launch of new academic and co-curricular initiatives aimed at fostering holistic growth and career readiness among our students.

To all prospective students: I invite you to become part of the LRMC and RSET community—where tradition meets progress, and education becomes a path to transformation.

With best wishes for a successful and fulfilling academic journey.

“
**The more you learn,
the more you earn.**

- Warren Buffett

Members of Governing council

Name	Designation
Shri. Ashok Saraf	Chairman
Shri. Banwarilal Jhunjhunwala	Vice-Chairman
Shri. Kailash Kejriwal	Secretary
Shri. Sunil S. Kabra	Member
Shri. Rajaram Chandgotia	Member
Shri. Vinay S. Saraf	Member
Smt.Poonam P. Maheshwari	Member
Ms. Nishita Mantry	Member
Shri. Akhilesh Lakhotia	Member
Smt. Nikita Lakhotia	Member
Shri. Arun P. Saraf	Member
Dr. Preeti Oza	Principal, Ex-Officio
Prof. Bhavana Vaidya	Administrator
Dr. Jayant Apte	Director of Education, GSCC
Capt. Anant Yadnik	Staff
Dr. Sunanda Kar	Educational Director
Shri. Kamal Bhagtani	Director, Branding & Fund Raising
Shri. Vikas Ahuja	Head Marketing



Principal's Message



Dr. Preeti Oza

Dear Students, Parents, and Academic Well-Wishers,

Greetings from **Ladhidevi Ramdhar Maheshwari Night College of Commerce (LRMC)**!

As we prepare to welcome a new academic year, I am filled with optimism and purpose. Education today stands at a transformative juncture in India, and LRMHC is proud to be at the forefront of this change.

The **National Education Policy (NEP) 2020** has ushered in a historic shift in the vision of higher education in India—one that promotes flexibility, skill development, critical thinking, and holistic learning. At LRMHC, we have wholeheartedly embraced this vision through the **implementation of the Revised Curriculum Framework (RCF) and the introduction of a credit-based, multidisciplinary approach** across all our programs.

Our evening college model has long served as a lifeline for working learners, and with the NEP's progressive roadmap, we are now equipped to offer even greater academic flexibility, choice-based credit systems, and vocational skill modules. This makes our students not only degree-holders, but well-rounded individuals prepared for the challenges of the 21st-century workforce.

Our dedicated faculty members have undergone continuous professional development to adapt to outcome-based education, interactive pedagogy, and digital integration in teaching. We are also enhancing student support services, industry linkages, and placement opportunities to ensure every learner's success beyond the classroom.

As the Principal of LRMHC, I assure you that this institution remains committed to **inclusive excellence, learner-centric education, and nation-building**. We invite you to be a part of this dynamic learning journey and experience the empowering impact of the National Education Policy in action.

Wishing you an enriching and inspiring academic year ahead.

“
The whole purpose of education is to turn mirrors into windows.. - Sydney J. Harris

Administrator's Message



Prof. Bhavana Vaidya

Dear Students,

Welcome to Ladhidevi Ramdhar Maheshwari Night College of Commerce. Established by Rajasthani Sammelan Education Trust (RSET) in 2014, the college offers the B.Com as well as M.Com programmes for students. RSET institutions have always aimed at a holistic, forward-looking and dynamic approach towards education and LRMCC is no exception. Our high teaching standards, excellent infrastructure, our varied curricular and extra-curricular activities all combine to create a campus where a student can find the best possible opportunities for all-round development.

Obtaining of "B" grade with a CGPA of 2.15 in its very first cycle of NAAC Assessment in the Academic year 2023-24 speaks volume about its continuous journey towards achievement of its motto "Enlightening Future." In its initial years it was an institution which offered only Under-Graduate course of B.Com but from the academic year 2021-22 it started M.Com (Advanced Accounting Programme) With this, LRMCC is now a college which offers both under-graduate and post-graduate degrees in Commerce which was one of the many goals it had set for itself to achieve since its establishment a decade back. Students with day-jobs who wish to do post-graduation will find LRMCC the perfect answer to their needs. The Covid pandemic posed several challenges in the way we teach and learn. Online classes and examinations are

things we have learnt to manage, teachers and students alike. However, at LRMCC we have ensured that all academic activities are conducted regularly and consistently. Our well-equipped library has several e-resources available to staff-members and students who can access learning materials without leaving their homes. Apart from academics, efforts are made to conduct extra-curricular and extension activities involving maximum number of students. Learning does not stop or falter at LRMCC, despite challenges like Covid.

We are confident that with our commitment to quality education, LRMCC will continue to reach more new milestones in its march towards excellence. I welcome you, dear students and invite you to join us on this rewarding journey !

“
**Education is the foundation
upon which we build our future.**

- Christine Gregoire

Rajasthani Sammelan Education Trust - RSET

Rajasthani Sammelan Education Trust, a registered public charitable trust was established in the year 1948 at Malad, Mumbai. With an aim to promote various educational, charitable and social activities, the trust has pioneered in providing educational opportunities to various sections of society. During the last six decades and more, the Trust has played a very vital role in promoting and providing better education from primary to post graduation in the fields of Commerce, Management, Information Technology and Media Studies. Apart from its educational pursuits, Rajasthani Sammelan Education Trust also caters to the social and humanitarian needs of the community.

Rajasthani Sammelan Education Trust had started its educational activities for girls, but in due course of time, it has opened its doors to boys as well. At present, more than 16,000 students are receiving education in various educational institutions run by the Trust. Thousands of students beyond the boundaries of the campus are enrolled with Kunjbihari S. Goyal Online Academy (GOLD).

The Educational Institutions owned and run by Rajasthani Sammelan Education Trust are :

- Kudilal Govindram Seksaria Sarvodaya School
- Kudilal Govindram Seksaria English School
- Ramniwas Bajaj English High School
- Mainadevi Bajaj International School
- Mainadevi Bajaj International Playschool
- Durgadevi Saraf Junior College
- Ghanshyamdas Saraf College of Arts & Commerce
- Kirandevi Saraf Institute of Complete Learning
- Durgadevi Saraf Institute of Management Studies
- Durgadevi Saraf Global Business School
- Deviprasad Goenka Management College of Media Studies
- Ladhidevi Ramdhar Maheshwari Night College of Commerce
- Kunjbihari S. Goyal Online Academy
- Nalini Shah Music Academy

Other organizations owned and managed by Rajasthani Sammelan Education Trust include:

- Draupadidevi Sanwarmal Women's Hostel
- Ramdhar Maheshwari Career Counseling Centre
- Pravinchandra D. Shah Sports Academy
- Jankidevi Bilasrai Bubna Boys' Hostel

Rajasthani Sammelan Education Trust is also providing many other facilities in its educational campus that include:

- Dhurmaj Bajaj Bhavan (Community Hall)
- Durgadevi Saraf Hall

- IT Hub
- Food Court
- Ramnarayan Saraf Educational Outlet
- RS CA Study Centre
- IRB Endowment Scholarship Fund
- Vijay Pal Singh Health Centre
- Kirandevi Saraf Library and Reading Room
- BKT Endowment Freeship Fund
- Jankidevi Bilasrai Bubna Endowment Freeship Fund
- Sharda Cropchem Bloomberg Lab
- Lalchand Dalmia Golf Cart

The Trust is providing financial assistance to needy persons for medical treatment through Trivenidevi Deora Chikitsa Sahayta Kosh. Scholarships are also provided to needy students to complete their education.



Rajasthani Sammelan Education Trust



About the College

Ladhidevi Ramdhar Maheshwari Night College of Commerce established in 2014, which falls under the aegis of Rajasthani Sammelan Education Trust provides degree education in Bachelor of Commerce (B.Com) and is affiliated to the University of Mumbai.

The institute is the best option for all the students who work during daytime. The college believes in paying individual attention to the educational needs of the students. The focus area of all the activities conducted is the personality development of a learner.

Our highly qualified teachers guide our learners in all their endeavors.

Our Commitments:

- Investing in good people and good infrastructure
- Ensuring consistent human enrichment and development
- Evolving a healthy work culture and team spirit
- Instilling a sense of pride and belonging to the institution
- Setting higher and newer goals in the pursuit of excellence

The college is located in RSET Campus on S.V. Road, near Sunder Nagar, Malad (W), Mumbai – 64. and has the following infrastructure.

- Spacious Canteen
- Learner's Common Room
- Communication Centre
- Cyber Zone with high-speed computers
- Well-equipped and Spacious Library
- Media Lab
- Durgadevi Saraf Auditorium with 300-seating capacity
- Pravinchandra D. Shah Sports Academy
- Vijay Pal Singh Health Centre

Highlights of our College

- Cultural Association which conducts Intra-Collegiate Competitions in Singing, Elocution, On the Spot Painting, Essay Writing and Rangoli. Teachers' Day is also celebrated with great enthusiasm every year.
- Extension and Extra-Curricular Activities- NSS, DLLE, WDC.

A. **NSS** – Blood Donation Drive, Residential Camp, Cleanliness Campaigns, Tree Plantation, Yoga Day Celebration, Rallies are the activities conducted by the National Service Scheme.

B. **DLLE**- The learners participate in UDAAN -University festival, Training program with field co-ordinators, Best out of Waste Competitions.

C. **WDC** – Programs on Women Empowerment and Health and Hygiene

Career Counselling Cell – Guidance from renowned institutes about Career and Competitive Exams.

Gold Academy E-learning Facility – Provides absolutely free online content to anyone located anywhere, anytime.



Programme: Bachelor of Commerce (B.Com)

First Year SEMESTER I (NEP)	Credits
Accountancy & Financial Management- I	2
Commerce-I	2
Basic Tools in Economics	2
Indian Knowledge System	2
Environmental Studies	2
Logic & Data Interpretation - I	2
Commercial Mathematics-I	2
Negotiation Skills	2
Business Communication Skills	2
Indian constitution	2
Co-Curricular (Any 1)	2
National Service Scheme	
Department of Lifelong Learning & Extension	
Sports	
TOTAL	22

First Year SEMESTER II (NEP)	Credits
Accountancy & Financial Management- II	2
Commerce-II	2
Market Analytics in Economics	2
Minor in Accounting - I	2
Environmental Issues and Management	2
Logic & Data Interpretation - II	2
Commercial Mathematics-II	2
Business Leadership Skills	2
Hindi Bhasha: Kaushal ke Aadhar	2
Foundation of Behavioral Skills	2
Co-Curricular (Any 1)	2
National Service Scheme	
Department of Lifelong Learning & Extension	
Sports	
TOTAL	22

Second Year SEMESTER III (NEP)	Credits
Commerce III (Production and Quality Management)	4
Commerce IV (Advertising I/ CSP-I)	4
Inventory Management	2
History of Economic Thoughts-I	2
Fintech Start up	2
IPR and scientific writing	2
Ability Enhancement Course	2
Vocational Enhancement Course	2
Co-Curricular (Any 1)	2
National Service Scheme	
Department of Lifelong Learning & Extension	
Sports	
TOTAL	22

Second Year SEMESTER IV (NEP)	Credits
CommerceV (Introduction to Finance)	2
CommerceVI (Advertising II)	2
Principles of Investment (2)	2
Introduction to AI	2
IT Service Management	2
Economic Policies	2
Ability Enhancement Course	2
Vocational Enhancement Course	2
Co-Curricular (Any 1)	2
National Service Scheme	2
Department of Lifelong Learning & Extension	2
Sports	
TOTAL	22

Third Year SEMESTER V (NEP)	Credits
Commerce-VII (Introduction to Marketing)	4
Commerce-VIII (Marketing Research)	4
Commerce-IX (Fundamentals of Event Management)	2
Export Marketing -I	4
Internet of Things	2
Foreign Exchange Market – I	2
Social Media Marketing	2
Field Project	2
TOTAL	22

Third Year SEMESTER VI (NEP)	Credits
Commerce-X (Human Resource Management)	2
Commerce-XI Knowledge Management	2
Commerce-XII (Fundamentals of HR Analytics)	2
Export Marketing -II	2
Computer Security	2
Foreign Exchange Market – II	2
On- Job Training	2
TOTAL	22

Programme: Master of Commerce (M.Com)

MCOM PART-I (SEM-I) (NEP)	Credits
Advanced Cost and Management Accounting I	4
Direct and Indirect Taxation (Income Tax)	4
Advanced Financial Accounting	4
Advanced Trends in Accounting - I	2
Mutual Fund Management and Wealth Management	4
Research Methodology	4
TOTAL	22

MCOM PART-I (SEM-I) (NEP)	Credits
Advanced Cost Accounting	4
Corporate Finance	4
Direct and Indirect Taxation (Goods and Services Tax)	4
Advanced Trends in Accounting - II	2
Accounting of Housing Society & Charitable Trust	4
On Job Training or Field Project	4
TOTAL	22

MCOM PART-II (SEM-III) (NEP)	Credits
Corporate Financial Accounting	4
Advanced Auditing	4
Financial Services	4
Advanced Trends in Accounting - III	2
Operations Research	4
Research project	4
TOTAL	22

MCOM PART-II (SEM-IV) (NEP)	Credits
Advanced Financial Management	4
International Financial Reporting Standards	4
Personal Financial Planning	4
Auditing and Assurance (Accounting Ethics and Corporate Governance)	4
Research project	6
TOTAL	22

Third Year SEMESTER V (Old Pattern)	Credits
Financial Accounting and Auditing VII - Financial Accounting	4
Financial Accounting and Auditing VIII - Cost Accounting	4
Commerce V	3
Business Economics V	3
Direct & Indirect Taxation Paper - I	3
Computer systems & Applications Paper -I	3
TOTAL	20

Third Year SEMESTER VI (Old Pattern)	Credits
Financial Accounting and Auditing IX - Financial Accounting	4
Financial Accounting and Auditing X - Cost Accounting	4
Commerce VI	3
Business Economics VI	3
Direct & Indirect Taxation Paper - II	3
Computer systems & Applications Paper -II	3
TOTAL	20



Advanced Accounting, Corporate Accounting & Financial Management

	Semester III - Elective Courses	Credits
1	Advanced Financial Accounting	06
2	Direct Tax	06
3	Advanced Cost Accounting	6
	Total Credits	24

	Semester III - Elective Courses	Credits
1	Corporate Financial Accounting	06
2	Indirect Tax Introduction of Goods and Service Tax	06
3	Financial Management	06
	Total Credits	24

Note

Project work is considered as a special course involving application of knowledge in solving / analyzing / exploring a real life situation/difficult problem. Project work would be of 06 credits. A project work may be undertaken in any area of Elective Courses.

Program Outcome:

For those specializing in accounting, this course focuses on acquiring students with the accounting concepts, tools and techniques for managerial decisions. While it is a mandatory qualification required for appearing in specific professional exams it is also a gateway to higher studies and research or doctorate level

Programme Specific Outcome

It aims at imparting basic understanding of the research methodology to provide an insight into the application of modern analytical tools and techniques in various aspects of business.



List of Teaching Staff

FACULTY	DESIGNATION/POSITION	QUALIFICATIONS	DEPARTMENT
Dr. Preeti Oza	Principal	PhD-English, PhD- Cultural Studies, M.Phil, PGD Mass Communication, M.A	Humanities
Prof. Vijendra Gupta	Assistant Professor	MCOM (Accountancy & Finance), UGC NET, MH-SET	Accounts
Prof. Jitendra Gupta	Assistant Professor	M.Com, M.Phil, PGDFM, UGC-NET, B.ED, CTET, M.A (Hindi) pursuing	Commerce
Prof. Sandhya Shrivastav	Assistant Professor	NET (Commerce), MCOM (Accountancy & Finance)	Accounts
Prof. Neelam Maurya	Assistant Professor	"PhD. Registered, PET(Mumbai, Pune), B. ED, M.COM (MANAGEMENT), M.COM (FINANCE), M.A (Economics) Pursuing"	Economics
Prof. Sangeeta Jalui	Assistant Professor	M.Com, B.Ed., MA in Economics	Economics
Prof. Chandrabhan Prajapati	Assistant Professor	MA (Geography), Ph.D Pursuing	Humanities
Prof. Chandrabhushan Yadav	Assistant Professor	MSC-IT	IT
Prof. Siddharth Apte	Assistant Professor	MA(CJ), SET	Humanities
Prof. Manoj Mishra	Assistant Professor	M.Com, B.ED, PGDHRM	Law
Prof. Ankit Bandal	Assistant Professor	M.Com, SET (Commerce)	Accounts
Prof. Harish Paralkar	Sports Teacher	B.com, M.com, BPEd, MPEd	Commerce
Prof. Prajakta Gaikwad	Assistant Professor	M.Com, SET (Commerce)	Accounts
Prof. Sagar Yeram	Assistant Professor	M.Com, SET (Commerce)	Accounts

NAME OF STAFF	DESIGNATION
Mrs. Nilima Sawant	Clerk
Mrs. Sneha Koli	Clerk
Mr. Umesh Chavan	Clerk
Mr. Nilesh Hule	Peon
Mr. Akshay Katvilkar	Peon



Trophies

Trophies Donated By	For the Event
Shri. Ramdhar Maheshwari Trophy donated by Ramdhar Maheshwari Foundation	Bahar LRMC (Male)
Matoshree Ladhidevi Ramdhar Maeshwari Trophy donated by Ramdhar Maheshwari Foundation	Bahar LRMC (Female)
Shri. Kailash Parasrampuriah Trophy donated by Shri Kailash Parasrampuriah	Singing Competition (Male)
Shri. Kailash Parasrampuriah Trophy donated by Shri Kailash Parasrampuriah	Singing Competition (Female)
Smt. Sarabatibai M. Deora Trophy donated by Shri. Suresh Deora	Painting Competition
Smt. Sarabatibai M. Deora Trophy donated by Shri. Suresh Deora	Rangoli Competition
Late Shri Satyanarayan Kabra Trophy donated by Sunil Kabra	Elocution Competition
Shri. Shyamlal Bhadech Trophy donated by Shri Kailash Kejriwal	Quiz Competition
Smt. Sushila Pradeep Kabra Trophy donated by Shri. Sunil Kabra	Essay Writing
Shri Madhusudan Maheshwari Trophy donated by Shri Madhusudan Maheshwari	Best Student Volunteer (NSS)
Shri. Prahladrai Shivdeo Saraf Trophy donated by Shri Arun P. Saraf	Best Student Volunteer (DLLE)
Smt. Chandrakaladevi Prahladrai Saraf Trophy donated by Shri Arun P. Saraf	Talent of the Year (Male)
Shri. Lalchand Dalmia Trophy donated by Shri. Vinod L Dalmia	Talent of the Year (Female)
Smt. Trivenidevi Shyamlal Bhadech Trophy donated by Shri Kailash Kejriwal	Student of the Year
Smt. Ladhidevi Ramdhar Maheshwari Trophy donated by Vedant Foundation	Academic Topper (1st Ranker), 3rd Semester Examination
Shri Madangopal Ramdhar Maheshwari Trophy donated by Ramdhar Maheshwari Foundation	Academic Topper (2nd Ranker), 3rd Semester Examination
Shri Ramdhar Chhotelal Maheshwari Trophy donated by Shri Balkrishna Lakhota	Academic Topper (1st Ranker), 2nd Semester Examination



Associations

The various departments came into being to chalk out co-curricular activities and to involve the students in the endeavour of fulfilling the motto of Enlightening Future.

- Internal Quality Assurance Cell (IQAC)
- Cultural Association
- Department of Lifelong Learning and Extension (DLLE) (*Entitled for Additional 10 Marks)
- National Service Scheme (NSS) (*Entitled for Additional 10 Marks)
- Sports Association
- Students Council (Constituted as per University Norms)
- Career Counselling Cell
- Women's Development Cell (WDC)



College Office

1. The Office is located on the Sixth floor of the college building.
2. The regular office timings are from 12:30 p.m. to 7:30 p.m. – Mondays to Saturdays
3. All payments are accepted from 12:30 p.m. to 2:30p.m. except on Saturdays.
4. Courtesy is appreciated and will be reciprocated.

Library

The college has a spacious Library recently renovated and named after Shri. Vallabh. G. Saraf Knowledge Resource Centre on the Fifth Floor of the College building. It is a pleasant reading place for students and teachers. It houses a valuable collection of books, journals, periodicals and reference books. It provides OPAC (Online Public Access Catalogue) facility for online searching and reservation of books. The library also has separate "Research Cell" for teachers for the research work. Daily newspapers, magazines, journals and books of general interest are also kept in the library for teachers and students. The library has around 500 CDs and more than 30 Classic DVDs of award winning movies which can be accessed by teachers and students. The library remains open on all working days from 12.00 p.m. to 8 p.m. on all working days. The library has an institutional membership of British Council Library and the American library, Mumbai. We have inter-library loan (ILL) facility for Students and Staff within RSET libraries. We have academic scholar schemes for toppers, who receive full set of text books for the academic year.



Rules & Regulations

- A. Every student must have a valid College Library Card which must be produced as and when demanded by the library staff.
- B. Students must handle the books or periodicals etc with great care. Any attempt to damage books or periodicals by defacing or tearing the pages will be treated as misconduct and will be dealt with strictly.
- C. Identity Card and Library Cards are non-transferable.
- D. If the original Identity Card or Library Card is lost, a duplicate will be issued on payment of Rs. 50/-

Home Issue

- A. Two books are issued to a student for a week.
- B. In case of late return of books, students will have to pay a fine at the rate of Rs. 2/- per day. While charging fine, holidays will be counted and no exemption will be granted in any case.
- C. All cases of disregard of these rules will be reported to the principal for appropriate action.

A. Library Services

- News Paper Clipping Service
- Current Awareness Service
- Reference Service
- Book Bank
- Indexing Service through OPAC
- Inter Library Loan Facility
- Book Reservation

The college has a book bank scheme for needy students. Interested students may contact the Librarian for the same and avail the facility.

Internet Facility: Free internet service is made available for students and staff.

General Instructions for Admission Procedure

Admissions will be conducted as per the guidelines and schedule announced by the University of Mumbai. The schedule of the admission will be displayed on the Notice Board when it is received from the University.

Documents Required

- Original marksheet of standard 12th exam along with two photocopies of the same.
- Two photocopies of standard 10th Marksheet.
- Original Leaving Certificate along with two copies of the same.
- Three recent passport sized photographs.
- Students belonging to Boards other than Maharashtra State must apply for Provisional Eligibility.
- Aadhar Card

Fee-structure for Three year Commerce Course:

The FEES STRUCTURE is as per the University of Mumbai guidelines. Students belonging to Reserved Category (SC/ST/OBC/SBC/VJNT/DTNT) have to furnish relevant and prescribed proof (caste certificate, income certificate etc.) to avail Scholarships/Freeships, as per the Government rules.

Please refer to <http://mahaeschol.maharashtra.gov.in> for further details.

Refund of Fees:

Refund of fees will be as per Ordinance 0.2859 relating to refund of funds, as amended vide University of Mumbai Circular No. UG/412 of 2008 dated 11-09-2008.



Documents Required:

For Students from Maharashtra Board -

1. Original Mark-sheet of HSC + 2 photocopies (front & Back)
2. Original Leaving Certificate of 12th Standard + 1 photocopy
3. Two photocopies of 10th Standard Mark-sheet

For Students from other than Maharashtra Board – In addition to above, following documents are required:

4. Additional 2 photocopies of Mark-sheet duly attested
5. Original Transference certificate + 2 photocopies duly attested
6. Original Migration Certificate + 2 photocopies duly attested

For Students from Foreign Universities/ Boards – In addition to above, following documents are required:

7. Candidates passing Class XII Examinations from Foreign Boards and students passing from International Baccalaureate or 'A' levels examinations- General Certificate of Education/Cambridge International School Exam of Cambridge or University of London must first obtain a 'PRIMA FACIE' Eligibility Letter from the University of Mumbai for the purpose of admissions.
8. Provisional Eligibility Certificate issued by the University + 2 photocopies duly attested.
10. 4 attested copies of Foreign Passport
11. 4 attested copies of VISA

For Students belonging to Reserved Categories : In addition to Maharashtra Board students documents –

12. Caste certificate in the name of students + 2 photocopies duly attested
13. Salary Certificate / Declaration of income of family from Tahsildar + 2 photocopies duly attested
14. Ration card + 2 photocopies duly attested
15. Aadhar Card + 2 photocopies duly attested

For students of Handicapped / Ex-service men / Widow etc –

16. Reservation as per Government and University Rules
17. Relevant documents to be submitted at the time of admission

Fees Structure: Under Graduate Courses

As per University Circular No. CONCOL / FEE / 292 of 2008 dated 07 /07 / 2008 (11th amendment), circular no. Exam

Fee / 149 of 2012-13 dated 19 /03 / 2013 & Krida / 04 March / 2014, V.K / Bha. Sa. Shi / Degree / 2 / 2013 dated 7 / 06 / 2013 & no. Krida Samiti / 18 dated 6 / 8 / 2014, circular no. UG / 253 of 2016 - 17 dtd 7 / 3 / 2017, रासेयो / २३७ / २०१६ - १७ dated 1 / 08 / 2017, क्र. ध. म. / ४ / २०१२-१३ dated 10 / 04 / 2012 and No. Exam. / Fees / 15 / 2018 dated 31. 01. 2018.

Concession of Fees :

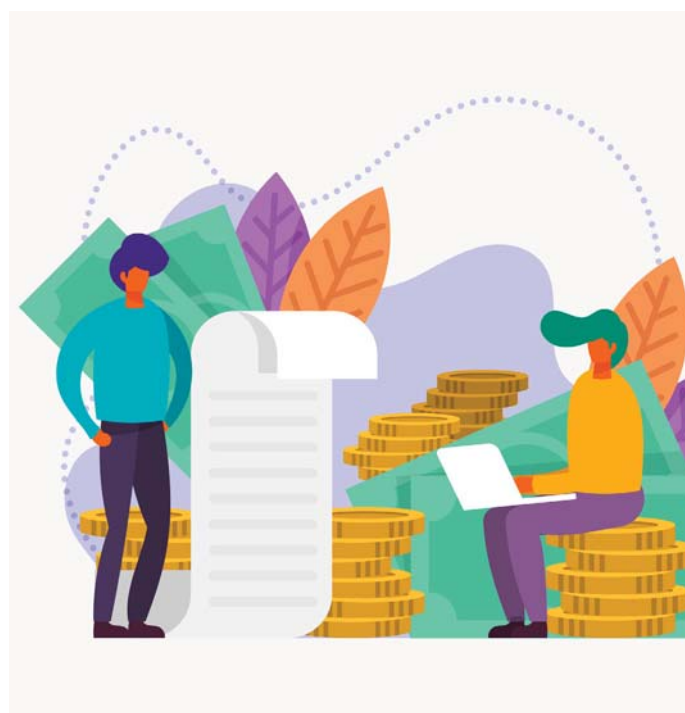
Students belonging to reserved category (SC/ ST/ DT/ NT/ OBC /SBC) are entitled to get fee concession, provided they have submitted necessary relevant documents at the time of admission.

Cancellation Policy :

18. Refund of fees will be as per University guidelines vide circular No. UG/412 OF 2008 ordinance relating to the refund of fees.
19. Students who wish to cancel their admission should fill the admission cancellation form available in the office/ admission desk
20. Submit duly filled and signed application form alongwith original Fees receipt issued by the college
21. Bank details (crossed cheque/photocopy of pass book) or NEFT details for refund of fees after deducting admission cancellation charges.

Refundable Deposits:

Students have to apply for refund of deposits within one year after completion of their course in the prescribed form available in the college office. Original fees receipt must be produced / attached while applying for the same.



Gold Academy

Kunjbihari S. Goyal Online Academy of Learning and Development (GOLD Academy) has the vision of providing absolutely free online learning content to anyone located anywhere anytime. At present 43350 students have already been registered and enrolled for F.Y.S.Y & T.Y.B.Com Courses in GOLD E- Learning Management System (IMS). GOLD Academy has uploaded MCQ's type online assessment test for all the students. GOLD Academy's team is regularly providing training and awareness to all the students, staff of the college on E-Learning contents so that students can get maximum benefit to prepare for their academics & exams.



Online Teaching - Learning



During this pandemic situation the entire Teaching-learning process has undergone complete change. Adapting to the new ways of teaching, we are going use Google Meet and Google Classroom on which faculty can upload their E-Content, set-up Quiz, Assignments. Grading can also be done through Google Classroom. Students can communicate with teachers like they used to in normal scenarios. This will help in empowering students through technology driven Teaching-learning.



Scholarship & Freeship



IRB
scholarship endowment fund
HONOURING EXCELLENCE

IRB Scholarship for two students each (one male and one female) from B.Com and Self-Finance will be given for academic excellence and all round performance

The scholars will be selected by a panel of faculty from Ghanshyamdas Saraf College and recommended to the IRB Scholarship Endowment Fund Committee and the Trustees of the Rajasthani Sammelan for final decision.



BKT
freeship endeavour fund
FOSTERING KNOWLEDGE

BKT Freeship will be given to those students who cannot afford education due to lack of funds. This will provide opportunity to many deserving students to obtain suitable education of their choice and there by make progress in their life by becoming properly qualified.

The Freeships will be decided by the BKT Endowment Fund Committee and forwarded to the Trustees of Rajasthani Sammelan for final decision.



Jankidevi Bilasrai Bubna
endowment freeship fund
EMBOLDENING STRENGTHS

Jankidevi Bilasrai Bubna Endowment Freeship Fund gives freeship to the needy and deserving students studying in various educational institutes of RSET. The freeship fund gives the much needed financial support to such students who do not have the financial means to pursue their education.

The recipients of freeship will be decided by Smt. Jankidevi Bilasrai Bubna Endowment Freeship Fund Committee of Rajasthani Sammelan Education Trust.



Pushpadevi Seksaria
endowment Fund
POWERING POSSIBILITIES

Rajasthani Sammelan Education Trust has established the Pushpadevi Seksaria Endowment Freeship Fund to provide financial assistance to deserving and needy students enrolled in various educational institutions under RSET. This endowment fund offers support to students who lack the financial resources to continue their educational pursuits, thereby empowering them to achieve their academic goals.



Chatrabhuj Narsee
endowment freeship fund
EMPOWERING DREAMS

Rajasthani Sammelan Education Trust has launched the Chatrabhuj Narsee Freeship Endowment Fund, an initiative aimed at providing financial support to meritorious and needy students across various RSET institutions. This fund helps the students who cannot afford to pursue their education, enabling them to continue their academic journey with ease.



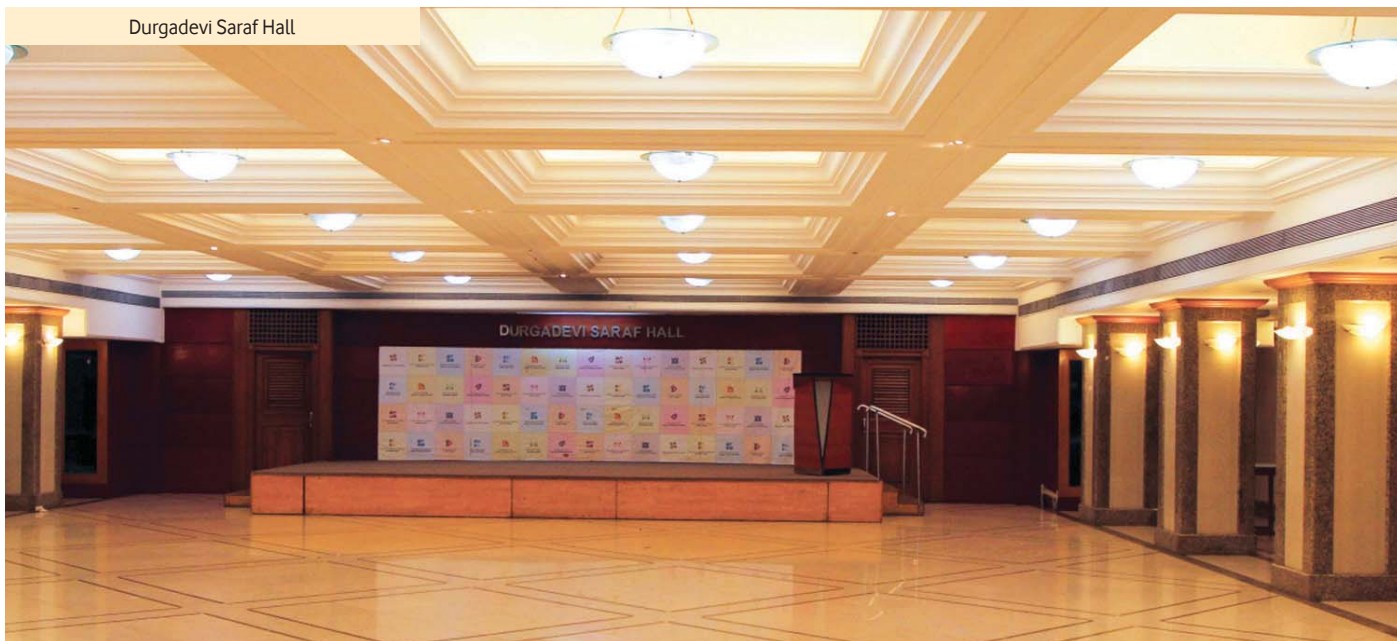
Code of Conduct and College Regulations

1. Students joining the college are strictly bound by the rules and regulations of the college.
2. Every student must obtain on admission, and wear hi/her identity card with latest photograph duly attested.
3. Attendance at lectures and tutorials is mandatory. Attendance of students is regulated by Ordinances 119, 119-A and 120 which states that – “for granting of terms, attendance of 75% of theory, practical's and tutorials conducted in the term.” Students who do not fulfil the requirements of the minimum attendance of 75% due to medical reasons or circumstances beyond their control are required to submit their valid explanation with documentary evidence to the Head of the Institute for condoning the deficiency. Decision of the Principal for condonation will be final.
4. In case of illness, a student must apply for leave, with doctor's certificate. He/She must personally report to the Prof. In- Charge / Vice-Principal on resuming classes.
5. Students must not loiter on the college premises while the classes are going on.
6. Students shall not do anything either inside or outside the college that will in any way interfere with its orderly conduct and discipline.
7. No society or Association can be formed in the college and no person can be invited to address a meeting without the principal's prior permission and sanction.
8. No student shall collect any money or contributions for picnic, trip, educational visit to any place, get-togethers, study-notes, charity or any other activity without prior sanction of the Principal.
9. Students are expected to take proper care of college property and to help in keeping the premises neat and clean. Causing damage to the property of the College e.g., disfigured walls, doors, fittings, or breaking furniture etc., is a breach of discipline and the guilty will be duly punished.
10. Students should not leave their books, valuables and other belongings in the classroom or any other place in the college.
11. The college is not responsible for lost property. However, students must contact college office regarding the same.
12. Students applying for certificates, testimonials etc. and those requiring the Principal's signature on any kinds of documents or applications should first contact the Office Superintendent. Students should not bring any paper directly to the Principal for signature.
13. If, for any reason, the continuance of the student in the College, is, in the opinion of the Principal, detrimental to the best interest of the College, the Principal may ask such a student to leave the college.
14. Insubordination and unbecoming language or misconduct on the part of the student are sufficient reasons for his/her suspension or dismissal from the college.
15. Students receiving Government or College Scholarships or any remission in fees, must note that the grant and continuance there of are subject to their good behaviour, regular attendance and satisfactory academic performance at College and University Examinations.
16. All college activities must be organised under the guidance and supervision of the Principal and Professor In-Charge with prior permission only.
17. Students must not associate themselves with any activity not authorised by the College Principal. Serious view will be taken of students found organizing or participating in such unauthorized activities.
18. Students using unfair means at examinations will be dealt with strictly in accordance with University rules.
19. It is the responsibility of the students to read notice-boards regularly for important announcements made by the College authorities from time to time. They will not be excused Or be given any concession on grounds of ignorance.
20. Use of Cell phones is banned inside classroom, college office and library.
21. Students are prohibited from using college name for any private or individual event. Violation may lead to permanently debarring such students from the college.
22. Ragging is strictly prohibited in higher educational institutions, as per the directions of Hon'ble Supreme Court and University
23. Grants Commission has made provision of 6.1 (o) of the UGC regulations, 2009. Students involved in any form of ragging will be severely punished.
24. Matters not covered under the existing rules will rest at the absolute discretion of the Principal.



Campus

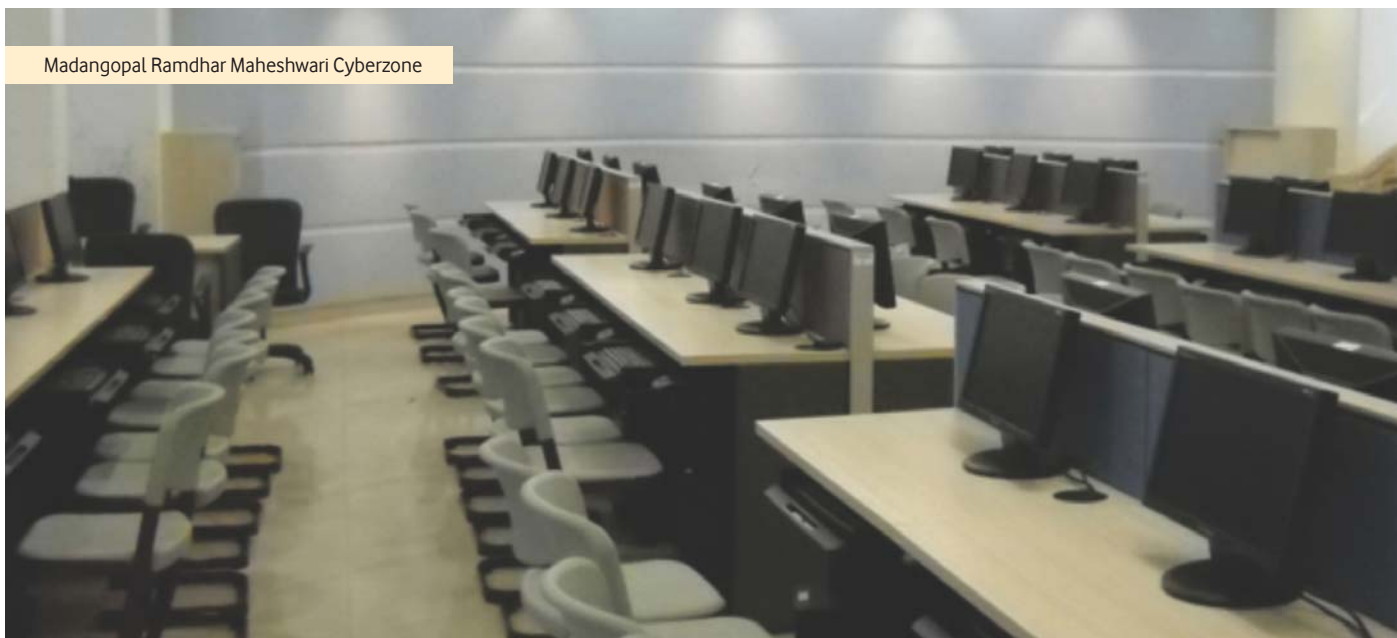
Durgadevi Saraf Hall



Ramnarayan Saraf Educational Outlet



Madangopal Ramdhar Maheshwari Cyberzone



Campus

Kirandevi Saraf Learning Centre



Shrivallabh G Saraf Knowledge Resource Centre



Pravinchandra D. Shah Sports Academy



Draupadidevi Sanwarmal Womens' Hostel

Draupadidevi Sanwarmal Women's Hostel is housed on the 11th & 12th floor of the educational complex of Rajasthani Sammelan Education Trust. The hostel can accommodate 135 girl students.

The hostel has Triple occupancy AC and non AC rooms on both the floors. All the rooms have attached toilets, designed in such a way that they can be serviced when the rooms are locked.

Each student in a room is provided with a bed, a writing table, a chair & a common sofa.

The hostel consists of a reception on the ground floor; a recreational area, a dining hall & a dry pantry on the 12th floor. The corridors of the hostel are naturally lit and ventilated by big skylights. Passages have been made colorful to give a lively ambience. Voids are provided between 11th & 12th floors for the students to communicate.

Fee Structure

Type of Accommodation	Fees for 12 months (July to June)	Security Deposit
Triple Sharing AC Room	₹ 2,28,000	₹ 30,000
Triple Sharing Non AC Room	₹ 1,80,000	₹ 30,000



Recreational Area



Cafeteria



Students Room



Hostel Passage

Jankidevi Bilasrai Bubna Boys' Hostel

Jankidevi Bilasrai Bubna Boys' Hostel is the latest addition in the educational endeavor of Rajasthani Sammelan Education Trust. The Hostel is located at a walking distance from RSET Campus. The independent Hostel building has seven floors and provides accommodation for 152 students. All rooms are air-conditioned and aesthetically designed. There are air conditioned study areas on all floors where the students can sit and study. Also, all the floors have a lounge and TV room for the recreation of the students. Other facilities include a communication room, dining room and games room. For the safety of the students, the building is equipped with fire detection and fire fighting system. CCTVs are also installed for 24 x 7 security. There is Wi-Fi access to the entire building. The building is maintained by the professional house-keeping agency. For the convenience of the hostel inmates, breakfast & dinner is provided to them.



Fee Structure

Type of Accommodation	Fees for 12 months (July to June)	Security Deposit
2 Bed Sharing AC	₹ 2,28,000	₹ 30,000
4 Bed Sharing AC	₹ 1,92,000	₹ 30,000



Tv Lounge



Quadruple Sharing Room



Study Area



Cafeteria

Courses @ RSET

 <p>Kudilal Govindram Seksaria sarvodaya school INSPIRE, INVENT, INITIATE</p> <p>Established in 1959</p>	<p>The school is authorised by the Maharashtra State Board of Education to offer SSC syllabus & the medium of instruction is Hindi.</p>	 <p>KGSS www.kgss.org.in</p>
 <p>Kudilal Govindram Seksaria english school INSPIRE, INVENT, INITIATE</p> <p>Established in 2010</p>	<p>The School is authorised by the Maharashtra State Board of Education to offer SSC syllabus & the medium of instruction is English.</p>	 <p>KGES www.kges.org.in</p>
 <p>Ramniwas Bajaj english high school UNLEASH YOUR POTENTIAL</p> <p>Established in 1985</p>	<p>The School is affiliated to the Council for the Indian School Certificate Examinations and follows the ICSE curriculum from Nursery to Std.X.</p>	 <p>RBHS www.rbhs.org.in</p>
 <p>Mainadevi Bajaj international school GIVING WINGS TO YOUR DREAMS</p> <p>Established in 2009</p>	<p>Authorised - Cambridge Primary Programme (CPP) International General Certificate of Secondary Education (IGCSE) Cambridge International AS & A Levels Programme (A Levels)</p>	 <p>MBIS www.mbis.org.in</p>
 <p>Durgadevi Saraf junior college IN PURSUIT OF EXCELLENCE</p> <p>Established in 1975</p>	<p>The Junior College is authorized by HSC Board of Government of Maharashtra to offer higher secondary courses in arts, commerce & science. College has started Bi-focal in science stream. The students have the option of selecting Computer Science & Electronics as their subjects of choice.</p>	 <p>DSJC www.dsje.org.in</p>
 <p>Ghanshyamdas Saraf college of arts & commerce EDUCATION EMPOWERS</p> <p>Established in 1983</p>	<p>Affiliated to University of Mumbai Undergraduate courses: B.Com B.Com (Accounting & Finance) B.Com (Banking & Insurance) B.Com (Financial Markets) B.Com (MS), B. Sc IT.</p> <p>Post Graduate Courses: M.Com (Accountancy) M.Com (Business Management)</p> <p>Ph.D. Programs Ph.D. in Commerce Ph.D. in Economics</p>	 <p>GSCC www.sarafcollege.org</p>
 <p>Kirandevi Saraf institute of complete learning WIDENING HORIZONS</p> <p>Established in 2005</p>	<p>University / Institute Tilak Maharashtra University Phasor Education Pvt. Ltd. Financial Planning Standards Board KIIMS ICSI</p> <p>Courses BCA, BBA JEE Mains / NEET / SSC / MBA MH-CET Certified Financial Planner Fashion Designing and Interior Designing CS Program</p>	 <p>KSIL www.ksil.org.in</p>
 <p>Durgadevi Saraf institute of management studies WE CREATE LEADERS</p> <p>Established in 2010</p>	<p>University & AICTE Approved Program: • Two years full-time Master in Management Studies (MMS)</p>	 <p>DSIMS www.dsims.org.in</p>

Courses @ RSET

 <p>Durgadevi Saraf global business school LEARN AND INSPIRE</p> <p>Established in 2020</p>	<p>Two years full time AICTE Approved Post Graduate Diploma in Management (PGDM)</p> <p>Autonomous Programs</p> <ul style="list-style-type: none"> • Global Entrepreneur Program • Family Managed Business Administration • Entrepreneurship Program • Women Entrepreneurship Program • Event Management • Supply Chain Management 	 <p>DSGS www.dsgs.org.in</p>
 <p>Deviprasad Goenka management college of media studies INDIA'S PREMIER MEDIA SCHOOL</p> <p>Established in 2010</p>	<p>University of Mumbai - Courses:</p> <p>MA - Communication and Journalism : (MA-CJ) MA - Film Television & New Media Production : (MA-FTNMP) BA - Multimedia & Mass Communication : (BA-MMC) BA - Film Television & New Media Production : (BA-FTNMP)</p> <p>DGMC Autonomous - Courses: Post Graduate Program (PGP)</p> <p>a. PGP in Integrated Marketing, Advertising & Communication (IMA&C), b. PGP in Event Management (EM) c. PGP in Sports Marketing & Management (SM&M)</p> <p>Certificate Courses:</p> <p>Audio & Video Editing Graphic Design Multimedia & Animation Digital Communication</p>	 <p>DGMC www.dgmc.org.in</p>
 <p>Ladhidevi Ramdhar Maheshwari night college of commerce ENLIGHTENING FUTURE</p> <p>Established in 2014</p>	<p>Rajasthani Sammelan Education Trust is running a Night College in its educational campus by the name of Ladhidevi Ramdhar Maheshwari Night College of Commerce from the academic year 2014-15. The college is affiliated to the University of Mumbai and offers B.Com & M.Com courses. Ladhidevi Ramdhar Maheshwari Night College of Commerce has accommodated students who have passed out from evening section of Durgadevi Saraf Junior College as well as other deserving students from the nearby areas.</p>	 <p>LRMC www.lrmc.org.in</p>
 <p>Ramdhar Maheshwari career counseling centre STEERING TO SUCCESS</p> <p>Established in 2011</p>	<ul style="list-style-type: none"> • Career Assessment and Guidance • Professional Consultancy • Personalised Skill building • Learning Difficulty Assessments • Remedial solutions for Academic Difficulty • IQ & Aptitude Assessments • Personal Counseling • Workshops for Teachers, Parent and Students • Study Abroad Counseling • SAT/GRE/GMAT/IELTS/TOEFL Coaching 	 <p>RMCC www.rmcc.org.in</p>
 <p>Kunjibihari S. Goyal online academy LEARNING BEYOND BOUNDARIES</p> <p>Established in 2014</p>	<p>Rajasthani Sammelan Education Trust has started an Online Academy to extend educational facilities to a large number of students who are unable to attend regular lectures in a college. At the same time, there are many students who are anxious to study further. Through online academy, lectures of well qualified lecturers will be available on the website and students will be able to study from the convenience of their own home. Besides, the student will be able to view the lecture on the website again and again to clear his/her concept. The online academy will provide lectures of degree and post-graduate courses.</p>	 <p>GOLD www.goldelearning.com</p>
 <p>Vishwanath Podar study centre INTELLECTION HUB</p> <p>Established in 2015</p>	<p>Rajasthani Sammelan Education Trust has started Vishwanath Podar Study Centre. In the city like Mumbai there are space constrains in many houses and students often face inconvenience to study in a peaceful atmosphere. This study centre proves to be a boon to many students, as they are able to study in a quite environment. The study centre remains open from morning till late evening for the benefit of students. The ICAI Extension counter has also been opened at the Vishwanath Podar Study Centre for the benefit of its students and members, for submission of various documents and distribution of study material to CA students.</p>	 <p>VPSC rset.edu.in/vpsc/</p>
 <p>Mainadevi Bajaj international playschool YOUNG EVOLVING MINDS</p> <p>Established in 2014</p>	<p>Rajasthani Sammelan Education Trust continues with its endeavors in the field of education with its new initiative for Toddlers which is, Mainadevi Bajaj International Playschool. The Trust aims to lay the foundation of learning for tomorrow's Global Citizen. Mainadevi Bajaj International Playschool is the first IPC Accredited Playschool in Mumbai, India and offers a Playgroup and Pre Nursery.</p>	 <p>MBIP www.mbip.org.in</p>
 <p>Nalini Shah music academy MUSICAL HARMONY</p> <p>Established in 2020</p>	<p>Nalini Shah Music Academy is the latest addition in the educational endeavour of Rajasthani Sammelan Education Trust. Nalini Shah Music Academy is a Hindustani classical and semi classical vocal and Indian and western Instrumental Music training Institute with an aim to train the learner with basic and technical knowledge of Music offering varied music learning courses across all age groups.</p>	 <p>NSMA www.nisma.org.in</p>

Facilities @ RSET



Dhurmal Bajaj
bhavan
COMMUNITY PARADISE

Established in 1975

Dhurmal Bajaj Bhavan is a community hall which was constructed in the year 1975-76 with the handsome donations received from Shri Dhurmal Bajaj Charity Trust & other philanthropists of the community. It is situated on S.V. Road, on the opposite side of the Educational Complex of Rajasthani Sammelan Education Trust. It has a spacious, air conditioned hall on the ground floor with a seating capacity of 350 persons. The building has two more halls on the first & second floors. There are air conditioned rooms adjacent to the hall on all the floors. Dhurmal Bajaj Bhavan caters to the needs of the community, as it is rented out to the people for marriage & other social & business purposes. Many cultural activities of the schools & colleges of the trust are also conducted in Dhurmal Bajaj Bhavan.



Trivenidevi Deora
chikitsa sahayata kosh
HELPING TO HEAL

Established in 2001

Rajasthani Sammelan Education Trust has set up Trivenidevi Deora Chikitsa Sahayta Kosh to provide medical help to needy people. It is managed by Trivenidevi Deora Chikitsa Sahayta Kosh Committee. The committee receives applications for medical help from needy people and on scrutiny of the applications, sanctions and disburses medical aid to the concerned persons who have applied for the same. Many people including the staff of all the institutions have availed of this facility from time to time.



Durgadevi Saraf
hall
TREASURING MEMORIES

Established in 2002

Durgadevi Saraf Hall is constructed in the educational complex of Rajasthani Sammelan Education Trust & is an air conditioned, sound proof hall with state of the art facilities. It has a seating capacity of approximately 300 persons & is mainly used for organizing seminars, conferences & cultural activities of the educational institutions of the trust. Besides, it is sometimes also given to the members of the community for marriage & other social needs. The hall has all the facilities to cater to business meetings. It has 2 air conditioned rooms adjacent to the hall.



Rajasthani Sammelan
I.T. hub
LINKING GLOBALLY

Established in 2010

To maintain universally accepted IT Standards in security, availability and data management, Rajasthani Sammelan Education Trust has decided to have an IT Hub as proper data centre which is supported and managed 24 x 7. The IT Hub is constructed on the 10th floor of the new building, in a built-up area of 3800 sq. ft. It is fully air conditioned and is operational. The main aim of constructing the IT Hub is to make all course material available on line to our students, easy flow of interaction between student and teacher through electronic medium, to create alumni data and keep students attached to our organization life-long through web, to safe guard the campus using video vigilance and electronic access control, to control the entire admission process of all institutions centrally, to safe guard all available data and provide fast internet services within the campus.



Rajasthani Sammelan
food court
FOOD FOR THOUGHT

Established in 2010

Rajasthani Sammelan Education Trust has started a cafeteria in its premises to provide snacks of large varieties to students. The cafeteria is situated on the ground floor on the south side of Durgadevi Saraf Hall in a total built-up area of approximately 4500 sq. ft. It is used by staff and students of all institutions. Various food items of different price range are supplied by the cafeteria to the students & staff of all our institutions. The cafeteria supplies all kinds of snacks and beverages to the canteens of all the institutions of Rajasthani Sammelan Education Trust.



Ramnarayan Saraf
educational outlet
ONE STOP EDU-SHOP

Established in 2010

Rajasthani Sammelan Education Trust has started an educational outlet in its campus by the name of Ramnarayan Saraf Educational Outlet. This educational outlet is dedicated to the memory of late Shri Ramnarayanji Saraf. The educational outlet is constructed on the ground floor of the new building of Ramniwas Bajaj English High School on the rear side, in a built-up area of 5000 sq. ft., with an independent entrance. In this educational outlet, all stationery items, text books etc. are sold at a reasonable price so that students need not go out to purchase such items elsewhere. It also has xeroxing facility for staff and students.



Vijay Pal Singh
health centre
WEALTH OF WELLBEING

Established in 2014

Rajasthani Sammelan Education Trust has started an educational outlet in its campus by the name of Ramnarayan Saraf Educational Outlet. This educational outlet is dedicated to the memory of late Shri Ramnarayanji Saraf. The educational outlet is constructed on the ground floor of the new building of Ramniwas Bajaj English High School on the rear side, in a built-up area of 5000 sq. ft., with an independent entrance. In this educational outlet, all stationery items, text books etc. are sold at a reasonable price so that students need not go out to purchase such items elsewhere. It also has xeroxing facility for staff and students.



Kirandevi Saraf
library and reading room
WORLD OF KNOWLEDGE

Established in 2014

Kirandevi Saraf Library and Reading room offers reading room facilities to such students who do not have a peaceful environment at their house. The reading room is open to all students from Standard 8th onwards. The Kirandevi Saraf Library and Reading room facility is available to the students from 6pm in the evening to 9pm and from 9am to 9pm on Sundays & holidays. The library is manned by staff of Rajasthani Sammelan Education Trust and the students are enrolled on payment of nominal fees to access the facilities.

Other Initiatives @ RSET

 <p>Draupadidevi Sanwamal women's hostel HEAVENLY DOMICILE</p>	<p>Established in 2012</p> <p>Draupadidevi Sanwamal Women's Hostel is one of the most prestigious and renowned Women's Hostel in western suburbs of Mumbai. It is located on the 11th and 12th floor of the building facing S.V. Road in RSET campus. The hostel has state of the art infrastructure with three bedded A.C. rooms, Wi Fi enabled recreational area, dining room, dry pantry, laundry and Gym facility. The hostel has round the clock vigilant security services with CCTV surveillance.</p> <p>www.dswhostel.org.in</p>
 <p>Pravinchandra D. Shah sports academy FITNESS REGIME</p>	<p>Established in 2015</p> <p>Pravinchandra D. Shah Sports Academy is a state-of-the-art facility, built on an approximate area of 24,000 sq.ft. with the most modern infrastructure. The Academy offers sports facilities like Tennis, Basketball, Box Cricket, Football Volleyball etc. and the turfs, imported from New Zealand, are made to international standards. This is perhaps, the first of its kind in-house sports academy in any of the educational institutions in the north-western part of Mumbai suburbs which caters to the growing needs of the students for sporting facilities. Recently another turf has been created for students to play various games.</p> <p>www.pdsa.org.in</p>
 <p>Jankidevi Bilasrai Bubna boys hostel A WISE HIVE</p>	<p>Established in 2018</p> <p>Jankidevi Bilasrai Bubna Boys' Hostel provides safe and secured accommodation to male students coming from other states and abroad in Mumbai for obtaining higher and professional education. It is housed in an independent building with seven floors and is situated near RSET campus. It has all state of art facilities such as a canteen, air-conditioned study area on all the floors, lounge and TV room, games room etc. All the rooms are air-conditioned.</p> <p>www.jbbh.org.in</p>
 <p>Remsons Group management research centre MANAGEMENT RESEARCH</p>	<p>Rajasthani Sammelan Education Trust has started Remsons Group Management Research Centre (in memory of Radhadevi Harlalka) in Durgadevi Saraf Institute of Management Studies. Research is an important part of management education for its growth and development. Remsons Group Management Research Centre has been playing an active role in the area of research in management studies. This has given an opportunity of interaction with scholars of reputed universities all over the globe. The Director as well as faculty members of DSIMS have been presenting research papers in many international and national seminars and workshops. We are sure that in future, many scholars will successfully complete Ph. D Programme from Durgadevi Saraf Institute of Management Studies.</p>
 <p>IRB scholarship endowment fund HONOURING EXCELLENCE</p>	<p>Rajasthani Sammelan Education Trust has started IRB Scholarship Endowment Fund to provide scholarships to all meritorious students of all the institutions of Rajasthani Sammelan Education Trust. This will give encouragement to many brilliant students to achieve further excellence in education. Meritorious students will be further motivated to work hard and give their best performance in the field of studies.</p>
 <p>BKT endowment freeship fund FOSTERING KNOWLEDGE</p>	<p>Rajasthani Sammelan Education Trust has started BKT Endowment Freeship Fund to provide freeship to those students who cannot afford education due to lack of funds. BKT Endowment Freeship Fund is going to provide opportunity to many deserving students to obtain suitable education and thereby make progress in their life by becoming properly qualified.</p>
 <p>Jankidevi Bilasrai Bubna endowment freeship fund EMBOLDENING STRENGTHS</p>	<p>Rajasthani Sammelan Education Trust has started Jankidevi Bilasrai Bubna Endowment Freeship Fund to give freeship to the needy and deserving students studying in various educational institutes of RSET. The Jankidevi Bilasrai Bubna Endowment Freeship Fund will provide the much needed financial support to such students who do not have the financial means to pursue their education.</p>
 <p>Pushpadevi Seksaria endowment Fund POWERING POSSIBILITIES</p>	<p>Rajasthani Sammelan Education Trust has established the Pushpadevi Seksaria Endowment Freeship Fund to provide financial assistance to deserving and needy students enrolled in various educational institutions under RSET. This endowment fund offers support to students who lack the financial resources to continue their educational pursuits, thereby empowering them to achieve their academic goals.</p>
 <p>Chatrabhuj Narsee endowment freeship fund EMPOWERING DREAMS</p>	<p>Rajasthani Sammelan Education Trust has launched the Chatrabhuj Narsee Freeship Endowment Fund, an initiative aimed at providing financial support to meritorious and needy students across various RSET institutions. This fund helps the students who cannot afford to pursue their education, enabling them to continue their academic journey with ease.</p>
 <p>Rajasthani Sammelan skill development centre SCULPTING SKILLS</p>	<p>The proposed Skill development centre aims to advance the skill sets of the students to compete in a global environment. The objective is to provide necessary information and training to develop the skills sets of the students and make them industry ready. The Skill Development Centre will help bridge the industry-academia gap for employability.</p> <p>PROPOSED</p>

Declaration

1. I have read the rules regarding admission and shall fully abide by them. I also understand and accept that if any discrepancy is found in the disclosures made by me in my admission form, the college will take appropriate action including cancellation of my admission without any refund of fees.

2. Declaration by parent

I have permitted my son/ daughter/ ward to join this college and I have read the details submitted by him in the admission form. I reiterate that the contents are true and correct. I also assure that my son/daughter/ward shall observe the rules and regulations of the college



Ladhidevi Ramdhar Maheshwari
night college of commerce
ENLIGHTENING FUTURE

Name of the Student _____

Name of the parent _____

Course _____

Application form no. _____

SIGNATURE OF THE PARENT

SIGNATURE OF THE STUDENT

BLANK

Admission Procedure for Online Application

1. Please fill the Pre-enrollment form on University of Mumbai website : <https://muugadmission.samarth.edu.in/> for B.Com **and** <https://muadmission.samarth.edu.in/> for M.Com and select Ladhidevi Ramdhar Maheshwari Night College of Commerce as the option and follow the instructions displayed on the website. After registering, they must save the Pre-enrollment form and upload the same with the college admission form.
2. The registration number of University of Mumbai's Pre-enrollment form is required to be entered in the College Application form.
3. The college application form is an online form, available on www.lrmc.org.in

Please fill the online application and upload the scanned copy of the following documents:

- a. Passport Size photo
- b. XII Mark sheet
- c. Leaving Certificate
- d. Caste Certificate (wherever applicable)
- e. University Pre-enrollment form

Note:

- Please upload a proper passport size photo taken on a clear background.
 - Documents should be scanned properly, not a photo taken from mobile.
4. On successful submission of Online Application form and scanned documents, the application will be verified by the admission department of the college.
 5. All verified applications will be considered for selection in merit list and will be offered provisional admission on the basis of merit.
 6. The merit list will be displayed on the college website and on the notice board in college.
 7. On selection in the Merit-list, the student would be sent an SMS and Email for payment of fees. Fee is to be paid online, using Net Banking, Debit Card or Credit card.
 8. The admission will be provisional and subject to verification and submission of the original documents.
 9. On successful fee payment, an acknowledgment will be sent on the registered email ID of the student.

If a student fails to submit the original document or if the details provided in the application form does not match with the original document, the admission will be cancelled and the fees paid will not be refunded.



BLANK

College Activities



Institutions



Kudilal Govindram Seksaria
sarvodaya school
INSPIRE, INVENT, INITIATE



Kudilal Govindram Seksaria
english school
INSPIRE, INVENT, INITIATE



Ramniwas Bajaj
english high school
UNLEASH YOUR POTENTIAL



Mainadevi Bajaj
international school
GIVING WINGS TO YOUR DREAMS



Durgadevi Saraf
junior college
IN PURSUIT OF EXCELLENCE



Ghanshyamdas Saraf
college of arts & commerce
EDUCATION EMPOWERS



Kirandevi Saraf
institute of complete learning
WIDENING HORIZONS



Durgadevi Saraf
institute of management studies
WE CREATE LEADERS



Durgadevi Saraf
global business school
LEARN AND INSPIRE



Deviprasad Goenka
management college of media studies
INDIA'S PREMIER MEDIA SCHOOL



Ladhidevi Ramdhar Maheshwari
night college of commerce
ENLIGHTENING FUTURE



Ramdhar Maheshwari
career counseling centre
STEERING TO SUCCESS



Kunjibihari S. Goyal
online academy
LEARNING BEYOND BOUNDARIES



Draupadidevi Sanwarmal
women's hostel
HEAVENLY DOMICILE



Pravinchandra D. Shah
sports academy
FITNESS REGIME



Vishwanath Podar
study centre
INTELLECTION HUB



Mainadevi Bajaj
international playschool
YOUNG EVOLVING MINDS



Jankidevi Bilasrai Bubna
boys hostel
A WISE HIVE



Nalini Shah
music academy
MUSICAL HARMONY



Rajasthani Sammelan
skill development centre
SCULPTING SKILLS

Endowment Funds & Research Chair



Remsons Group
management research centre
MANAGEMENT RESEARCH



I R B
scholarship endowment fund
HONOURING EXCELLENCE



B K T
endowment freeship fund
FOSTERING KNOWLEDGE



Jankidevi Bilasrai Bubna
endowment freeship fund
EMBOLDENING STRENGTHS



Pushpadevi Seksaria
endowment Fund
POWERING POSSIBILITIES



Chatrabhuj Narsee
endowment freeship fund
EMPOWERING DREAMS

Facilities



Dhurmaal Bajaj
bhavan
COMMUNITY PARADISE



Durgadevi Saraf
hall
TREASURING MEMORIES



Trivenidevi Deora
chikitsa sahayata kosh
HELPING TO HEAL



Ramnarayan Saraf
educational outlet
ONE STOP EDU-SHOP



Vijay Pal Singh
health centre
WEALTH OF WELLBEING



Kirandevi Saraf
library and reading room
WORLD OF KNOWLEDGE



Rajasthani Sammelan
I.T. hub
LINKING GLOBALLY



Rajasthani Sammelan
food court
FOOD FOR THOUGHT