

**Rajasthani Sammelan's,
Ladhidevi Ramdhar Maheshwari Night
College of Commerce
RSET Campus, S.V. Road**

Policy Statement on Alternate Source of Energy and Energy Conservation



cf
PRINCIPAL
Rajasthani Sammelan's
Ladhidevi Ramdhar Maheshwari
Night College of Commerce
Malad (W), Mumbai - 400 064

Policy Statement on Alternate Sources of Energy and Energy Conservation

(Rajasthani Sammelan's, Ladhidevi Ramdhar Maheshwari Night College of Commerce reserves the right to modify the policy from time to time)

Introduction:

The energy usage policy of Ladhidevi Ramdhar Maheshwari Night College of Commerce is to manage energy in such a systematic way so as to minimize its impact on the environment. The policy implies to explore the renewable energy resources, to reduce burden of the government and to find out substitute natural resources as solutions to the energy crisis.

Objectives of the Policy:

- To assess our energy usage and measure its impact on the environment.
- To install photovoltaic solar panels for the generation of alternate energy.
- To install LED bulbs in the complete campus to save energy.
- To ensure the availability of necessary resources to achieve our objectives.
- To provide information and training opportunities on energy saving measures.

Scope of the Policy:

Energy policy is binding for all the components of the institution and applies to all its stakeholders and to the various activities undertaken by the institution. It will help us to embed efficiency and environmental awareness into our everyday activities, thus helping us to realize our responsibilities and commitment to conservation of natural resources and to limit its usage. This policy will be communicated to the students and employees via internal communication Channels. The Energy Policy, objectives and targets will be reviewed on a regular basis under the guidance of Principal of the college.


Measures for Energy Conservation

- Use of LED Bulbs
- Switch of the Bulbs, Fans and other electric equipment immediately after use.
- Optimum use of energy generated by Solar Panels.
- Turn off your monitor after work when you leave your table.
- Avoid use of more lights in conference hall, office, seminar hall, lecture halls and laboratories when not necessary



- Avoid use of more lights in conference hall, office, seminar hall, lecture halls and laboratories when not necessary
- Use fans and AC only when needed.
- Use solar energy for street lights in the campus




PRINCIPAL
Rajasthani sammelan's
Ladhidevi Ramdhar Maheshwari
Night College of Commerce
Malad (W), Mumbai - 400 064

1. Alternate Sources of Energy and Energy Conservation

Sr. No.	Facilities for alternate Sources of Energy
1	Solar Energy
2	Use if LED bulbs

Solar Energy:

The college adopted eco-friendly lifestyle by the consumption of energy through solar source for which Solar Panels of 8 KW installed on the terrace. It produces average 72 to 90 Units electricity per day.

In college, on the roof of building, Solar Power Plant of capacity 8KW is installed.

Solar lights are also installed in the college premises.

Excess (surplus) solar energy generated by rooftop solar modules are exported to the grid of electricity distribution utility through net metering and direct saving in electricity bills are availed from electricity distribution.

Timer based control of light feeder is also available for energy usage in college.

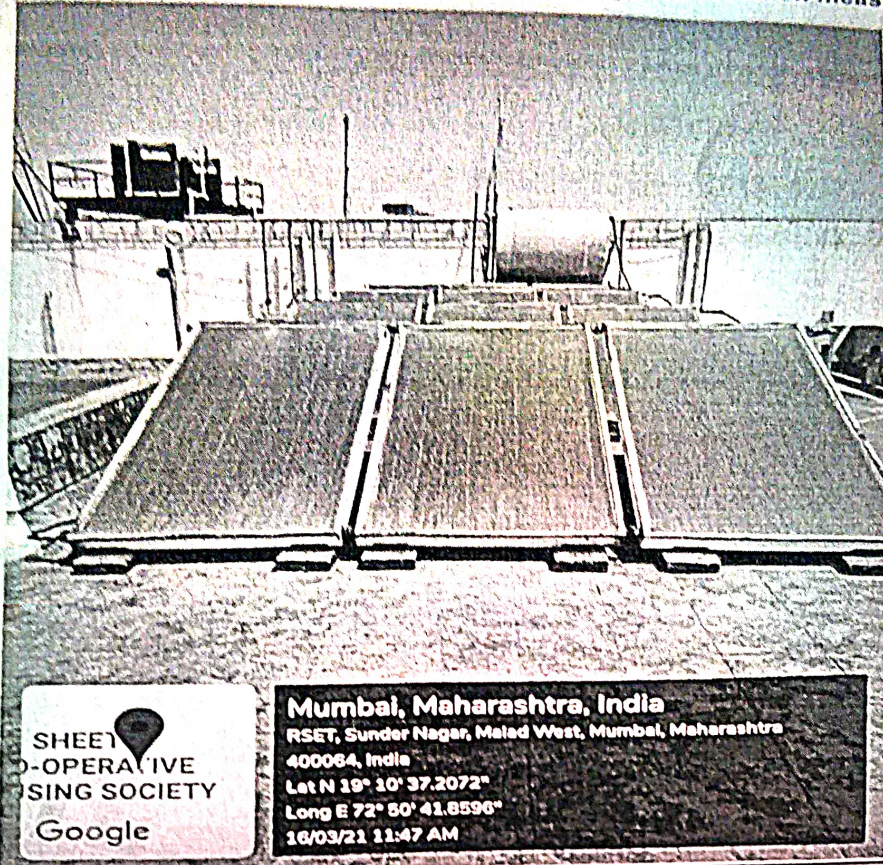
The campus lights replaced by CFL and LED lights to conserve energy.

Care is taken to switch off the lights when not required. Computers, printers, fans and other electric instruments are switched off when not in use.

The message **SAVE POWER, SAVE WATER** is publicized widely to create awareness and sense of responsibility through rallies.



Alternative sources of energy and energy conservation measures




Solar Panels for energy conservation in the campus



Use of LED Bulbs:

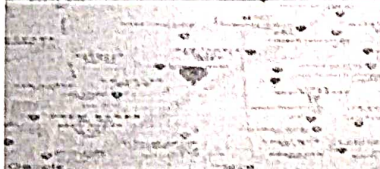
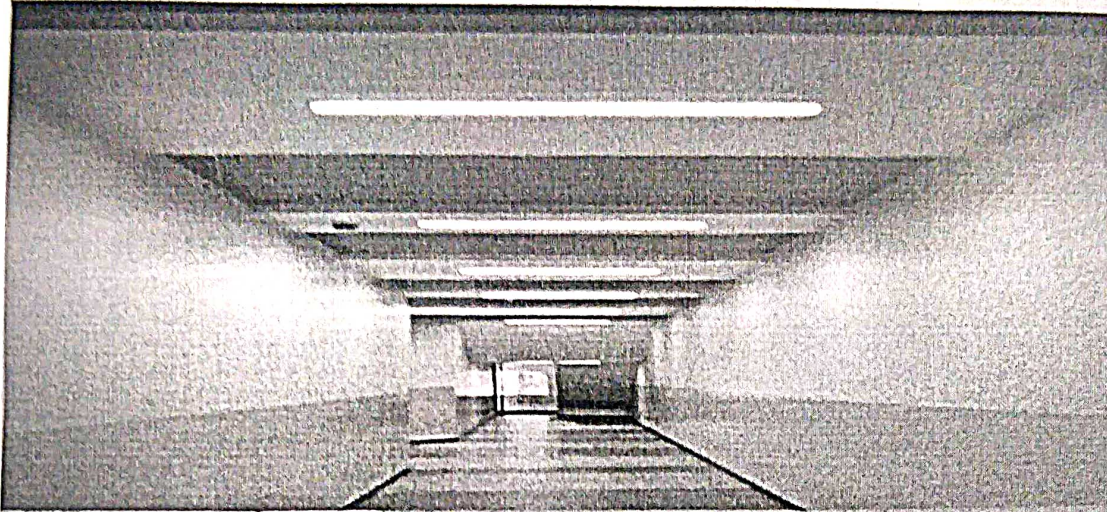
LED lighting is more beneficial for saving energy and conserving the environment. These lighting solutions help a lot in maintaining campus security, providing better quality light, improving student safety, and giving facility managers a sense of peace that comes with purchasing long-lasting products. LED light bulbs last much longer and consume far less energy. The high efficiency and directional nature of LEDs makes them ideal for many uses.

LEDs are fixed in college campus street, parking, classrooms and in office


PRINCIPAL
Rajasthani Sammelan's
Ladhidevi Ramdhar Maheshwari
Night College of Commerce
Malad (W), Mumbai - 400 064



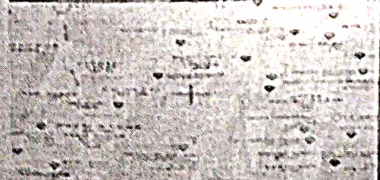
LED lights are used which are consuming less energy



Mumbai
Maharashtra
India
2020-12-28(Mon) 10:21(am)



24°C
75°F



Mumbai
Maharashtra
India
2020-12-28(Mon) 12:33(pm)



28°C
82°F

